

ATP5I

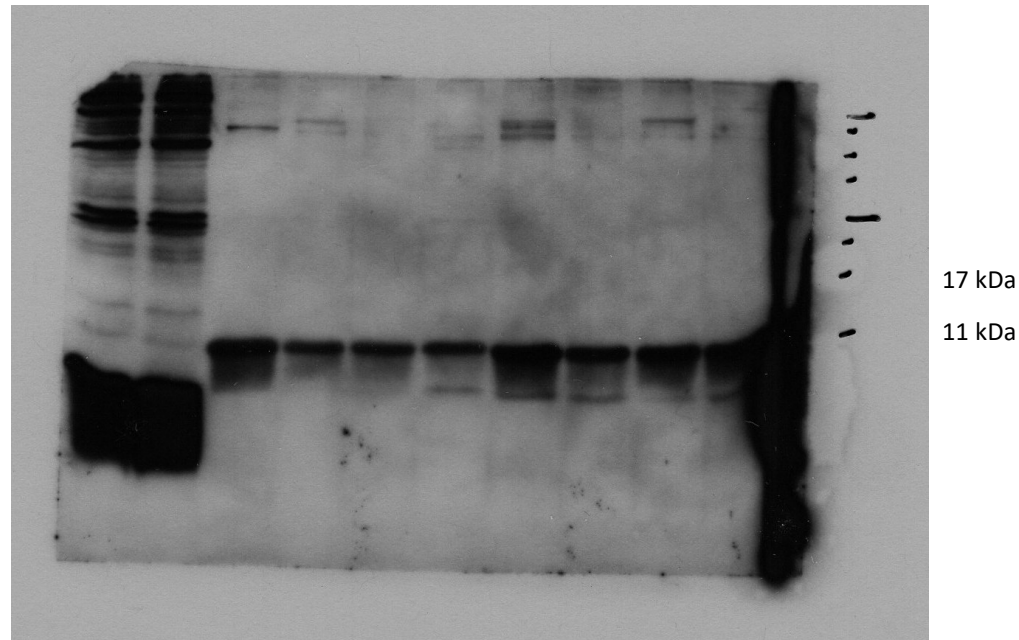


Figure 1F, Source Data 2. Original membrane corresponding to Figure 1F. Lane 1 represents whole cell lysate from non-transfected cells. Lane 2 corresponds to whole cell lysate from pcDNA-ATP5I-transfected cells. Lanes 3–6 correspond to pull-down incubations performed in non-transfected conditions with beads alone, biotin, biotin-functionalized amine, and biotin-functionalized biguanide, respectively. Lanes 7–10 correspond to the same incubation conditions performed in pcDNA-ATP5I-transfected cells. This membrane was acquired from autoradiography film, and the molecular weight marker positions are annotated manually to indicate the apparent size of the detected bands.